

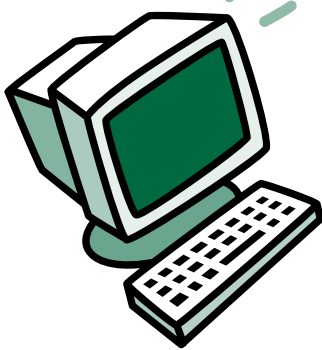
# UNIVERSITY of NORTH TEXAS

## Tuition & Fees Payment Options

### 5 Easy Steps to Paying Online

Check payments, MasterCard, Visa, Discover, and American Express

- **1.** Logon to [my.unt.edu](http://my.unt.edu), and select **Tuition, Fees, and Payment**.
- **2.** Select **Make a Payment > Make a Payment by Credit Card or eCheck > Pay Bill > Make Payment**.
- **3.** Enter the dollar amount without any commas or dollar signs.
- **4.** Select **Credit Card** or **eCheck**, and then enter the requested information.
- **5.** Click on **Continue**, sit back and wait for your confirmation.



Payment must be completed by your designated due dates listed under your account summary at [my.unt.edu](http://my.unt.edu). Remember to make payment on the same day for classes added during the add/drop or revision period.

Additional information and answers to frequently asked questions are available online at [essc.unt.edu/saucs](http://essc.unt.edu/saucs).

### 5 Easy Steps for Using the Installment Plan

The installment plan is available for the Fall and Spring semesters. The first payment includes 50% of the tuition and mandatory fees, 100% of instructional fees and a service fee of \$12.50. The two remaining payments include 25% of the tuition and mandatory fees. View your account summary at [my.unt.edu](http://my.unt.edu) for the amounts after you select the installment plan. You must place yourself on the installment plan each new semester.

- 1.** Log on to [my.unt.edu](http://my.unt.edu) using your EUID and password.
- 2.** Click on **Tuition, Fees, and Payment > Make a Payment**.
- 3.** Click On **Installment Plan Information > Post Installment Plan**.
- 4.** Now go back to **Tuition, Fees, and Payment > Make a Payment > Make a Payment by Credit Card or eCheck**.
- 5.** Follow the 5 Easy Steps to Paying Online to complete your first installment!

Installment Due Dates	Fall 2005	Spring 2006
First Payment	Registration Date	Registration Date
Second Payment	September 30	February 17
Third Payment	October 28	March 24



Additional information and answers to frequently asked questions are available online at [essc.unt.edu/saucs](http://essc.unt.edu/saucs).